



OTTO
PLACE

ELEVATING
EVERY STANDARD
OF EC LIVING



MORE TO THE GOOD LIFE

Luxury living isn't just about exquisite craftsmanship and thoughtfully designed interiors.

At Otto Place, it also means being perfectly positioned for fresh opportunities – with front-row seats to new Tengah, not to mention Jurong Lake District and Jurong Innovation District in your backyard.

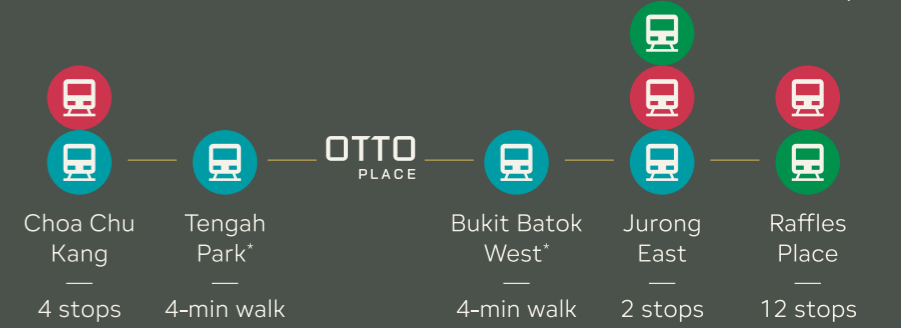
Having the fast pass into the city, with the upcoming Tengah Park and Bukit Batok West MRT stations only a 4-minute walk away.

Coming home to exceptional facilities across eight landscape zones, where you can reconnect with your loved ones, and rediscover all that sparks your passions.

More than just the good life, live your best life here.



NEW TENGAH



*Station names to be confirmed



MORE POSSIBILITIES IN A TRANSFORMED NEIGHBOURHOOD



EVERYDAY CONVENIENCE FOR EXCEPTIONAL LIVING

Life isn't just greener at Singapore's first smart and sustainable town, it's easier too. Especially with the Plantation Plaza neighbourhood centre that brings F&B and retail delights, a supermarket and more right to your doorstep.

Taking care of your health is just as easy with an upcoming general and community hospital that makes quality medical care part of your neighbourhood privileges.



THE GOOD LIFE MEETS THE GREAT OUTDOORS

The lush life awaits in every direction, starting from a Forest Fringe just alongside Otto Place that connects you to a larger green network at the Forest Corridor.



THE SMART START FOR BRIGHT MINDS

Give your child a head start with a coveted address close to esteemed institutions, including Princess Elizabeth Primary School (<1km) and the future Anglo-Chinese School (Primary) (<2km).



ARTIST'S IMPRESSION OF TENGAH © HOUSING & DEVELOPMENT BOARD

MORE OPPORTUNITIES AT THE FOREFRONT OF THE FUTURE



WHERE THE WORLD REVOLVES AROUND YOU

Live at the heart of convenience with gourmet delights and retail therapy at Jem and Westgate.



ARTIST'S IMPRESSION OF WATERFRONT PROMENADE ALONG JURONG LAKE © URA

HERE, THE GRASS IS ALWAYS GREENER

Set to be Singapore's new national garden, the vast greenlands and restored wetlands of Jurong Lake Gardens are perfect for any nature foray, from birdwatching to sunset strolls.



JURONG LAKE GARDENS



ARTIST'S IMPRESSION OF JURONG LAKE DISTRICT © URA



ARTIST'S IMPRESSION OF JURONG INNOVATION DISTRICT © JTC

JOBS OF TOMORROW, CLOSER TO HOME

Goodbye, long work commutes. At Otto Place, you are only minutes away from Jurong Lake District, Singapore's largest mixed-use business district outside of the city centre. It's set to grow in a big way, with over 120 hectares of new developments and 100,000 projected new jobs coming your way.

Just as close is Jurong Innovation District, Asia's leading advanced manufacturing hub that brings another 95,000 job opportunities even closer to where you live.



ARTIST'S IMPRESSION OF THE NEW SCIENCE CENTRE © SCIENCE CENTRE SINGAPORE



ARTIST'S IMPRESSION OF THE NEW SCIENCE CENTRE © SCIENCE CENTRE SINGAPORE

PLAYTIME DOWN TO A SCIENCE





Weekends will never be boring again. Especially at the New Science Centre, Singapore's largest living lab of science and tech. Discover 7.4 hectares of awe-inspiring experiences, from fire tornadoes to stargazing.







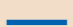
ARTIST'S IMPRESSION OF JURONG LAKE DISTRICT © URA

MORE CONVENIENCE WITH EVERYTHING YOU NEED AROUND YOU



	CONNECTIVITY		
	Bukit Batok West MRT Station [^]	4-min walk	
	Tengah Park MRT Station [^]	4-min walk	
	Jurong East MRT Station	2 MRT stops away	
	Pan Island Expressway (PIE)	2-min drive	
	Kranji Expressway (KJE)	7-min drive	
	EDUCATION		
	Princess Elizabeth Primary School (<1km)	7-min walk	
	Anglo-Chinese School (Primary) [*] (<2km)	7-min drive	
	Bukit Batok Secondary School	3-min drive	
	Dulwich College (SG)	3-min drive	
	Millennia Institute	3-min drive	
	SHOPPING & DINING		
	Jem	2 MRT stops away	
	Westgate	2 MRT stops away	
	Plantation Plaza	4-min drive	
	Yuhua Village Market & Food Centre	4-min drive	
	West Mall	6-min drive	
	Tengah Town Centre [^]	10 to 15-min drive	
	BUSINESS		
	Jurong Lake District	5-min drive	
	Jurong Innovation District	8-min drive	
	NATURE & RECREATION		
	Forest Fringe [^]	2-min walk	
	Civil Service Club @ Bukit Batok	4-min drive	
	New Science Centre [^]	5-min drive	
	Little Guilin	5-min drive	
	Jurong Lake Gardens	6-min drive	

Legend

-  Jurong Region Line (U/C)
-  East-West Line
-  North-South Line
-  Downtown Line
-  Park Connector Network (PCN)

[^] Future amenities
^{*} Station names to be confirmed

Actual travel time may vary due to traffic conditions.
 All information is correct at time of printing and is subject to change without prior notice.

0 100m 500m
 FOR ILLUSTRATION ONLY

MORE DISCOVERIES ACROSS EIGHT EXCEPTIONAL LANDSCAPE ZONES

Some travel the world in search of the ultimate private resort experience. But at Otto Place, you can find it right where you live. With myriad facilities set amidst eight thoughtfully designed landscape zones, this is where boredom is rare, and luxury is a given.

THE ARRIVAL

Enter the good life from the moment you step foot into Otto Place. Inspired by the grid-like compositions of Piet Mondrian's iconic art, exceptional architecture and landscape design welcome you to a world of possibilities where you can live out each and every whim.



ARRIVAL PLAZA
ARTIST'S IMPRESSION

A striking grid roof greets you with a mesmerising display of shifting sunlight and shadow.



SKY GARDEN TERRACE (LEVEL 16)
ARTIST'S IMPRESSION

The finest gardens may very well be up in the sky.

THE OASIS

For the best views of nature, simply stay home. Whether you are exploring the ground floor or working out at the Sky Garden Fitness on level 16, you'll be surrounded by breathtaking greenery.



FOR ILLUSTRATION ONLY

Skating Trail
Take the scenic route as you glide through life.



GARDEN TRAIL
ARTIST'S IMPRESSION

A tranquil path weaving through verdant greenery, and above the shimmering blue of a bio-pond.

THE GARDENS

Get your hands in the soil, your wheels on the path, and your soul in sync with nature. The Gardens is where neighbours become friends, and every day offers something fresh.



FOR ILLUSTRATION ONLY

Community Garden
Plant it, plate it. Nothing's fresher, or more delicious, than homegrown.



CLUB ROOM 1 & 2
ARTIST'S IMPRESSION

Two well-appointed club rooms for everything from celebrations to conversations.



FOR ILLUSTRATION ONLY

Steam Room
The best way to let off steam.

THE COMMONS

Come home to your personal sanctuary, where even the everyday feels extraordinary. The stunning 50M Lap Pool takes centre stage, but with four other pools across Otto Place, there's always room for you to unwind in your own private escape.



STARLIGHT DECK
ARTIST'S IMPRESSION

Magical even after dark.



READING AND WORK LOUNGE
ARTIST'S IMPRESSION

Expand your perspective with inspiring views of the waterside.

THE SANCTUARY

From the 50M Lap Pool, the riverine flow of the Hydrotherapy Pool guides you to The Sanctuary, where tranquility awaits. From inviting conversations at the Gourmet Dining Lounge to undisturbed focus at the Reading and Work Lounge, there's a space to suit your every mood.



GOURMET DINING LOUNGE
ARTIST'S IMPRESSION

Be the host of dinner parties that leave a lasting impression.



GAMES LOUNGE
ARTIST'S IMPRESSION

Where the real win is a good time together.



HYDROTHERAPY POOL & GOURMET DINING LOUNGE
ARTIST'S IMPRESSION

Your daily relaxation ritual with a foot spa and bubble jacuzzi.



GYMNASIUM
ARTIST'S IMPRESSION

Everything you need to hit your next personal best.



CHILDREN'S PARTY ROOM
ARTIST'S IMPRESSION

Bigger celebrations for the little ones.

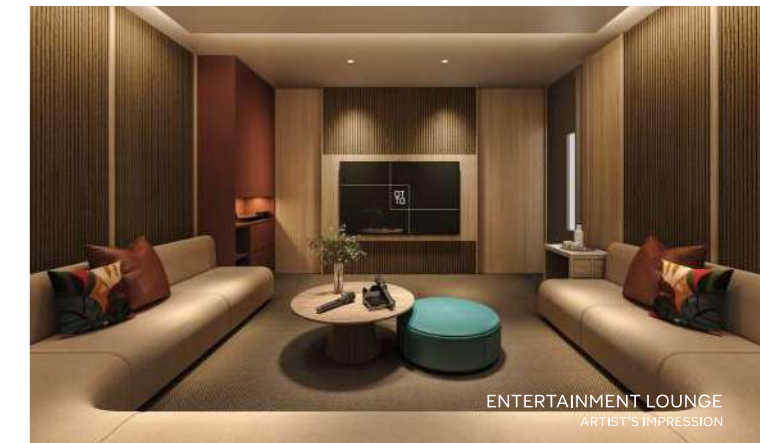
THE FAMILY COVE

The Family Cove brings everyone together in a space that is as practical as it is fun. With the Family Pool and Children's Pool thoughtfully placed within easy sight of the BBQ Pavilions, you can keep an eye on the little ones without missing a beat of the conversation.



FOR ILLUSTRATION ONLY

From little thrills to big family moments.



ENTERTAINMENT LOUNGE
ARTIST'S IMPRESSION

The place to be for both karaoke champs and movie buffs.



CHILDREN'S PLAYGROUND
ARTIST'S IMPRESSION

THE ARENA

Fuel your competitive spirit or build the spirit of teamwork. With two multi-purpose courts designed for five different sports activities, you'll always have the perfect stage to flex your skills.



FOR ILLUSTRATION ONLY

Multi-purpose Court 1 & 2
Tennis, badminton, futsal, pickleball or basketball.
Whichever you prefer, the ball is in your court.



SKY GARDEN (LEVEL 16)



MORE JOY WITH FACILITIES FOR EACH AND EVERY WHIM

A THE ARRIVAL

- A1 Arrival Plaza

B THE OASIS

- B1 Outdoor Fitness
- B2 Green Pavilion
- B3 Garden Trail
- B4 Sky Garden (Level 16)
- B4a Sky Garden Fitness (Level 16)
- B4b Sky Garden Play (Level 16)
- B4c Sky Garden Terrace (Level 16)

C THE GARDENS

- C1 Community Garden
- C2 Garden Pavilion
- C3 Skating Trail

D THE COMMONS

- D1 Sculpture Lawn
- D2 Zen Pavilion
- D3 Cabana Deck
- D4 Pool Lounge
- D5 50M Lap Pool
- D6 Jacuzzi Cove
- D7 Social Place
- D7a Club Room 1
- D7b Club Room 2
- D7c Steam Room
- D7d Changing Room
- D8 Courtyard Garden
- D9 Picnic Lawn
- D10 Picnic Deck
- D11 Outdoor Shower

E THE SANCTUARY

- E1 Hydrotherapy Pool
- E1a Jacuzzi Nook
- E1b Jacuzzi Lounge

- E1c Foot Spa
- E1d Jets Shower
- E2 Aqua Gym Pool
- E3 Trees Grove
- E4 Starlight Deck
- E5 Reflection Pond
- E6 Sanctuary Pavilion
- E7a BBQ Pavilion 1
- E7b BBQ Pavilion 2
- E8 Flower Garden
- E9 Lounge Place
- E9a Reading and Work Lounge
- E9b Games Lounge
- E9c Gourmet Dining Lounge

F THE FAMILY COVE

- F1 Yoga Lawn
- F2 Meditation Pavilion
- F3 Children's Pool
- F4 Family Pool
- F5 Play Lawn
- F6 Children's Playground
- F7 BBQ Pavilion 3
- F8a BBQ Pavilion 4
- F8b BBQ Pavilion 5
- F9 Active Place
- F9a Gymnasium
- F9b Entertainment Lounge
- F9c Children's Party Room
- F9d Pool Deck

G THE ARENA

- G1 Multi-purpose Court 1
- G2 Multi-purpose Court 2

H OTHERS

- H1 Guardhouse
- H2 Management Office
- H3 Consumer Switch Room (Basement)
- H4 Main Distribution Frame Room (Basement)
- H5 Electrical Substation (Basement)
- H6 Bin Center (Basement)
- H7 Generator Set
- H8 Side Gate
- ☐ Ventilation Shaft
- ☐ Roof Water Tank



ALL PLANS ARE SUBJECT TO CHANGES BY THE RELEVANT AUTHORITIES. MEASUREMENTS ARE APPROXIMATE ONLY AND SUBJECT TO FINAL SURVEY. INFORMATION ACCURATE AT POINT OF PRINTING. BP APPROVAL NO.: A1839-00007-2024-BP01 BP APPROVAL DATE: 08 MAY 2025

FOR ILLUSTRATION ONLY



MORE LUXURY BUILT INTO
EVERY CORNER OF HOME

From spacious 3-bedroom to 4-bedroom + Study units, every detail is thoughtfully designed for modern living, with natural light bringing warmth to contemporary elegance.

FOR ILLUSTRATION ONLY



Dream bigger

There's no compromise on your comfort, no matter the room. The master bedroom easily accommodates a King-sized bed, while the other bedrooms comfortably fit a Queen-sized bed with side tables. With a full-height wardrobe, you can maximise your space with zero compromise on style.

For selected unit types, the adjoining study area can be repurposed as part of the master bedroom – whether as a home office, nursery, or walk-in dresser. And it all comes together in a nature-inspired palette that blends warmth and tranquility with understated elegance.



Your home, your way

Thoughtful space planning extends to the household shelter. Whether you need extra storage, a laundry nook or a private space for your helper, the possibilities are endless with a home designed to be as flexible as your lifestyle.



Every detail polished to perfection

Form meets function in bathrooms equipped with seamless storage, as well as premium fittings by Bravat and Hansgrohe.

Crafted for higher taste

A modern sliding glass door opens to a kitchen that balances refined design with everyday practicality. Fully outfitted with German-quality fittings from the distinguished Küche collection, this is where culinary dreams take shape.



UNIT DISTRIBUTION CHART

BLOCK 20 (690095)

UNIT / FLOOR	1	2	3	4
20				
19				
18				
17				
16	C2	C1	D1	C4
15	C2	C1	D1	C4
14	C2	C1	D1	C4
13	C2	C1	D1	C4
12	C2	C1	D1	C4
11	C2	C1	D1	C4
10	C2	C1	D1	C4
9	C2	C1	D1	C4
8	C2	C1	D1	C4
7	C2	C1	D1	C4
6	C2	C1	D1	C4
5	C2	C1	D1	C4
4	C2	C1	D1	C4
3	C2	C1	D1	C4
2	C2	C1	D1	C4
1	C2-G	C1-G	D1-G	C4-G

BLOCK 22 (690096)

UNIT / FLOOR	5	6	7	8
20	D1	C1	D2	C4
19	D1	C1	D2	C4
18	D1	C1	D2	C4
17	D1		D2	C4
16	D1		D2	C4
15	D1	C1	D2	C4
14	D1	C1	D2	C4
13	D1	C1	D2	C4
12	D1	C1	D2	C4
11	D1	C1	D2	C4
10	D1	C1	D2	C4
9	D1	C1	D2	C4
8	D1	C1	D2	C4
7	D1	C1	D2	C4
6	D1	C1	D2	C4
5	D1	C1	D2	C4
4	D1	C1	D2	C4
3	D1	C1	D2	C4
2	D1	C1	D2	C4
1	D1-G	C1-G	D2-G	C4-G

BLOCK 24 (690097)

UNIT / FLOOR	9	10	11	12
20	C2	C5	D2	D1
19	C2	C5	D2	D1
18	C2	C5	D2	D1
17		C5	D2	D1
16		C5	D2	D1
15	C2	C5	D2	D1
14	C2	C5	D2	D1
13	C2	C5	D2	D1
12	C2	C5	D2	D1
11	C2	C5	D2	D1
10	C2	C5	D2	D1
9	C2	C5	D2	D1
8	C2	C5	D2	D1
7	C2	C5	D2	D1
6	C2	C5	D2	D1
5	C2	C5	D2	D1
4	C2	C5	D2	D1
3	C2	C5	D2	D1
2	C2	C5	D2	D1
1	C2-G	C5-G	D2-G	D1-G

BLOCK 26 (690098)

UNIT / FLOOR	13	14	15	16
20	C2	C1	D2	C4
19	C2	C1	D2	C4
18	C2	C1	D2	C4
17	C2	C1	D2	C4
16	C2	C1	D2	C4
15	C2	C1	D2	C4
14	C2	C1	D2	C4
13	C2	C1	D2	C4
12	C2	C1	D2	C4
11	C2	C1	D2	C4
10	C2	C1	D2	C4
9	C2	C1	D2	C4
8	C2	C1	D2	C4
7	C2	C1	D2	C4
6	C2	C1	D2	C4
5	C2	C1	D2	C4
4	C2	C1	D2	C4
3	C2	C1	D2	C4
2	C2	C1	D2	C4
1	C2-G	C1-G	D2-G	C4-G

BLOCK 28 (690099)

UNIT / FLOOR	17	18	19	20
20	D2	C4	D1	C5
19	D2	C4	D1	C5
18	D2	C4	D1	C5
17	D2	C4	D1	C5
16	D2	C4	D1	C5
15	D2	C4	D1	C5
14	D2	C4	D1	C5
13	D2	C4	D1	C5
12	D2	C4	D1	C5
11	D2	C4	D1	C5
10	D2	C4	D1	C5
9	D2	C4	D1	C5
8	D2	C4	D1	C5
7	D2	C4	D1	C5
6	D2	C4	D1	C5
5	D2	C4	D1	C5
4	D2	C4	D1	C5
3	D2	C4	D1	C5
2	D2	C4	D1	C5
1	D2-G	C4-G	D1-G	C5-G

BLOCK 30 (690090)

UNIT / FLOOR	21	22	23	24
20	D2	C4	C2	C5
19	D2	C4	C2	C5
18	D2	C4	C2	C5
17	D2	C4	C2	C5
16	D2	C4	C2	C5
15	D2	C4	C2	C5
14	D2	C4	C2	C5
13	D2	C4	C2	C5
12	D2	C4	C2	C5
11	D2	C4	C2	C5
10	D2	C4	C2	C5
9	D2	C4	C2	C5
8	D2	C4	C2	C5
7	D2	C4	C2	C5
6	D2	C4	C2	C5
5	D2	C4	C2	C5
4	D2	C4	C2	C5
3	D2	C4	C2	C5
2	D2	C4	C2	C5
1	D2-G	C4-G	C2-G	C5-G

BLOCK 32 (690091)

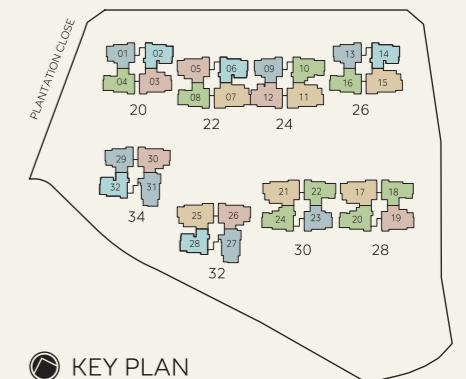
UNIT / FLOOR	25	26	27	28
20	D2	D1	C3	C1
19	D2	D1	C3	C1
18	D2	D1	C3	C1
17	D2	D1	C3	C1
16	D2	D1	C3	C1
15	D2	D1	C3	C1
14	D2	D1	C3	C1
13	D2	D1	C3	C1
12	D2	D1	C3	C1
11	D2	D1	C3	C1
10	D2	D1	C3	C1
9	D2	D1	C3	C1
8	D2	D1	C3	C1
7	D2	D1	C3	C1
6	D2	D1	C3	C1
5	D2	D1	C3	C1
4	D2	D1	C3	C1
3	D2	D1	C3	C1
2	D2	D1	C3	C1
1	D2-G	D1-G	C3-G	C1-G

BLOCK 34 (690092)

UNIT / FLOOR	29	30	31	32
20				
19				
18				
17				
16				
15	C2	D1	C3	C1
14	C2	D1	C3	C1
13	C2	D1	C3	C1
12	C2	D1	C3	C1
11	C2	D1	C3	C1
10	C2	D1	C3	C1
9	C2	D1	C3	C1
8	C2	D1	C3	C1
7	C2	D1	C3	C1
6	C2	D1	C3	C1
5	C2	D1	C3	C1
4	C2	D1	C3	C1
3	C2	D1	C3	C1
2	C2	D1	C3	C1
1	C2-G	D1-G	C3-G	C1-G

Legend

- 3-Bedroom Deluxe
- 3-Bedroom Deluxe + Study
- 3-Bedroom Luxury + Study
- 4-Bedroom Deluxe + Study
- 4-Bedroom Luxury + Study



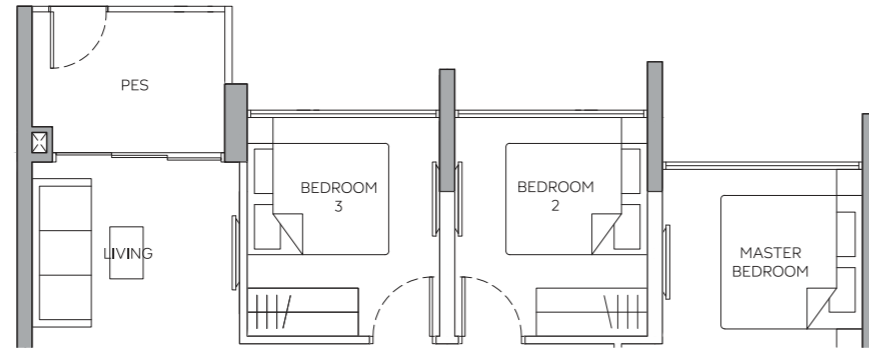
KEY PLAN

3-BEDROOM DELUXE

TYPE C1-G

81 sqm / 872 sqft
(inclusive of 6 sqm PES)

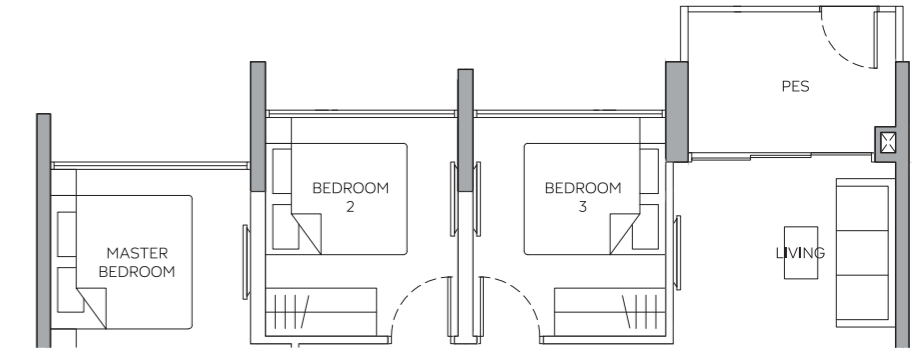
- BLOCK 20 #01-02
- BLOCK 22 #01-06
- BLOCK 26 #01-14
- BLOCK 32 #01-28
- BLOCK 34 #01-32



TYPE C2-G

84 sqm / 904 sqft
(inclusive of 6 sqm PES)

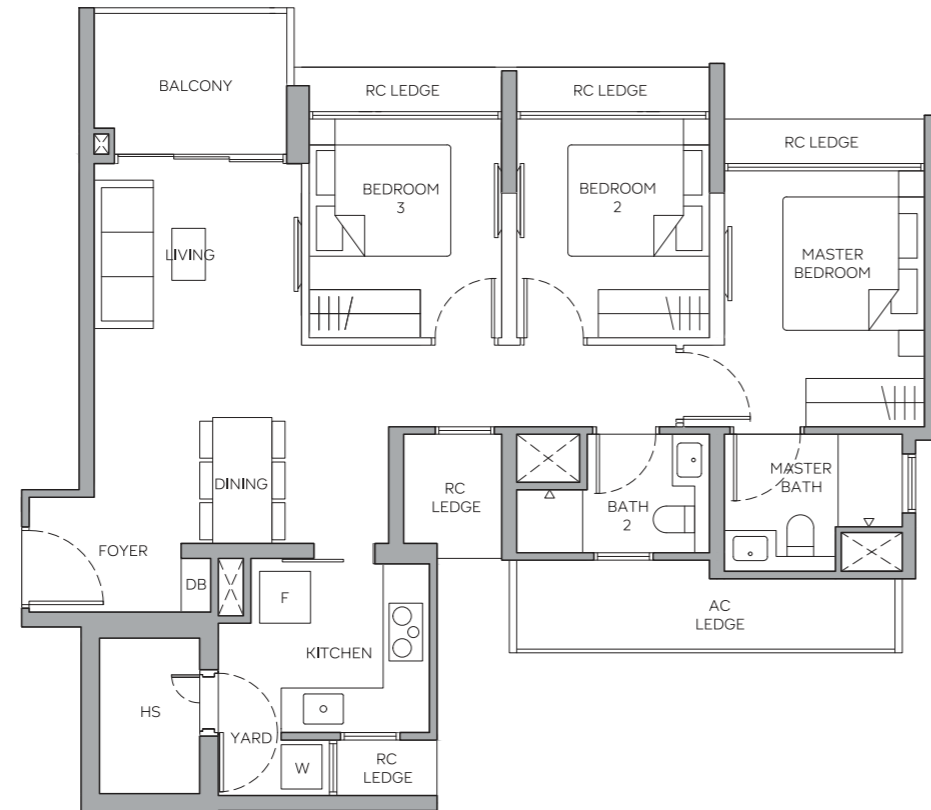
- BLOCK 20 #01-01
- BLOCK 24 #01-09
- BLOCK 26 #01-13
- BLOCK 30 #01-23
- BLOCK 34 #01-29



TYPE C1

81 sqm / 872 sqft
(inclusive of 6 sqm Balcony)

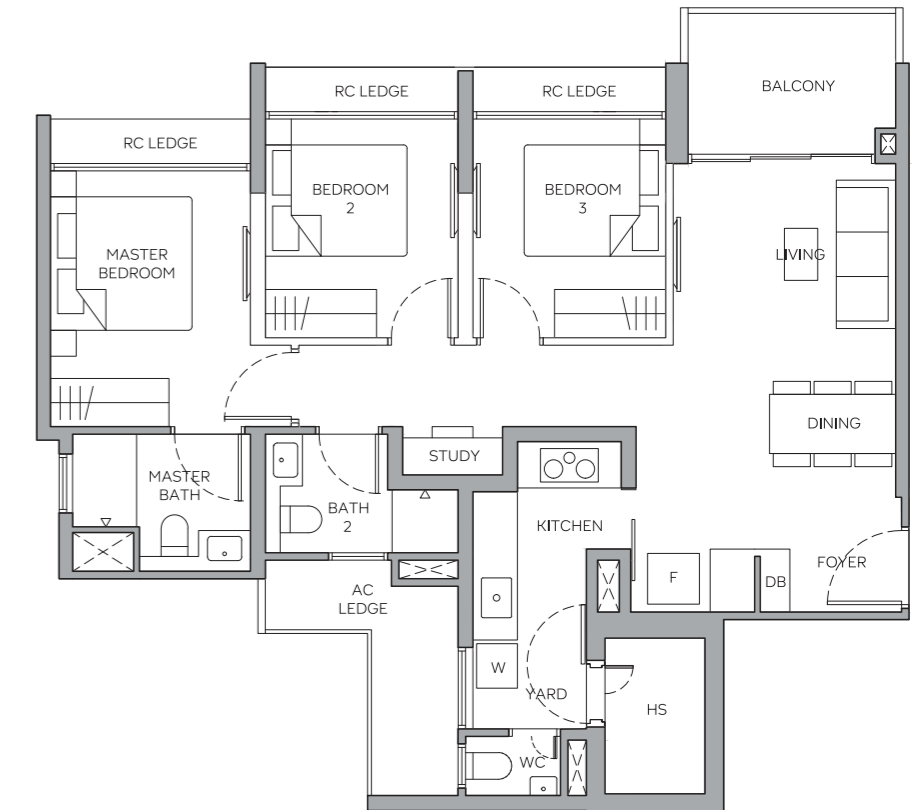
- BLOCK 20 #02-02 TO #16-02
- BLOCK 22 #02-06 TO #15-06
#18-06 TO #20-06
- BLOCK 26 #02-14 TO #20-14
- BLOCK 32 #02-28 TO #20-28
- BLOCK 34 #02-32 TO #15-32



TYPE C2

84 sqm / 904 sqft
(inclusive of 6 sqm Balcony)

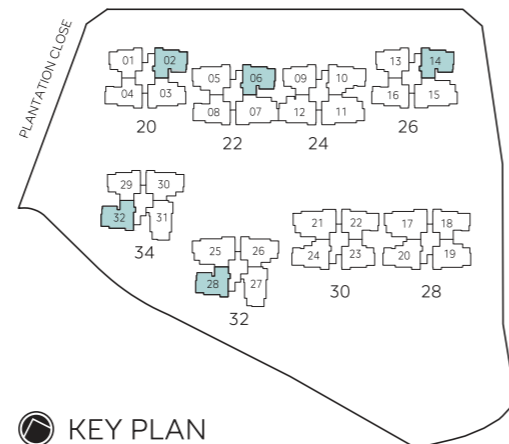
- BLOCK 20 #02-01 TO #16-01
- BLOCK 24 #02-09 TO #15-09
#18-09 TO #20-09
- BLOCK 26 #02-13 TO #20-13
- BLOCK 30 #02-23 TO #20-23
- BLOCK 34 #02-29 TO #15-29



LEGEND

- | | | | |
|----|-----------------------|-----|--|
| F | FRIDGE (NOT INCLUDED) | PES | PRIVATE ENCLOSED SPACE |
| W | WASHER (NOT INCLUDED) | AC | AIR CONDITIONER LEDGE (NON-STRATA) |
| DB | DISTRIBUTION BOARD | RC | REINFORCED CONCRETE LEDGE (NON-STRATA) |
| HS | HOUSEHOLD SHELTER | ☒ | VOID SPACE (NON-STRATA) |

0 2m 4m 6m 8m



KEY PLAN

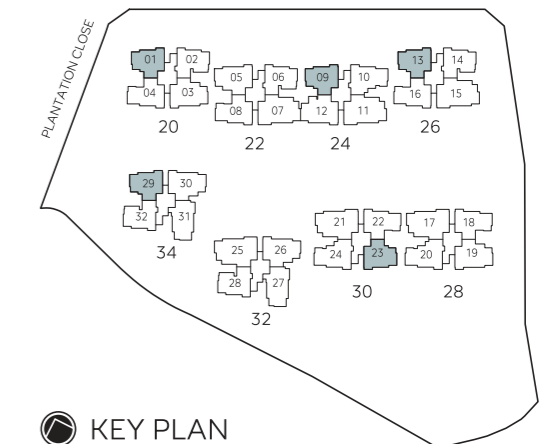
ALL PLANS ARE SUBJECT TO CHANGES BY THE RELEVANT AUTHORITIES.
MEASUREMENTS ARE APPROXIMATE ONLY AND SUBJECT TO FINAL SURVEY.
INFORMATION ACCURATE AT POINT OF PRINTING.
BP APPROVAL NO.: A1839-00007-2024-BP01 DATED 08 MAY 2025

3-BEDROOM DELUXE + STUDY

LEGEND

- | | | | |
|----|-----------------------|-----|--|
| F | FRIDGE (NOT INCLUDED) | PES | PRIVATE ENCLOSED SPACE |
| W | WASHER (NOT INCLUDED) | AC | AIR CONDITIONER LEDGE (NON-STRATA) |
| DB | DISTRIBUTION BOARD | RC | REINFORCED CONCRETE LEDGE (NON-STRATA) |
| HS | HOUSEHOLD SHELTER | ☒ | VOID SPACE (NON-STRATA) |
| WC | WATER CLOSET | | |

0 2m 4m 6m 8m



KEY PLAN

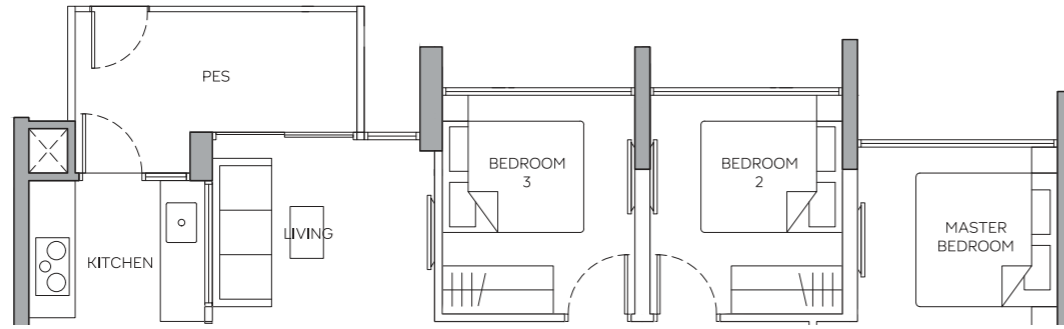
ALL PLANS ARE SUBJECT TO CHANGES BY THE RELEVANT AUTHORITIES.
MEASUREMENTS ARE APPROXIMATE ONLY AND SUBJECT TO FINAL SURVEY.
INFORMATION ACCURATE AT POINT OF PRINTING.
BP APPROVAL NO.: A1839-00007-2024-BP01 DATED 08 MAY 2025

3-BEDROOM DELUXE + STUDY

TYPE C3-G

87 sqm / 936 sqft
(inclusive of 8 sqm PES)

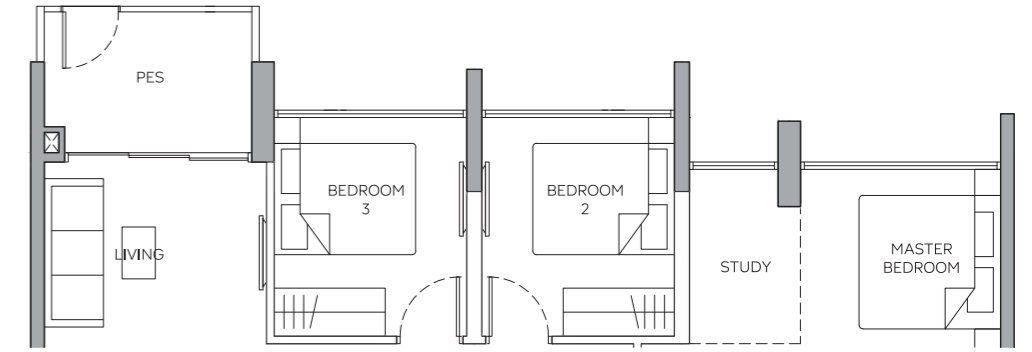
BLOCK 32 #01-27
BLOCK 34 #01-31



TYPE C4-G

88 sqm / 947 sqft
(inclusive of 6 sqm PES)

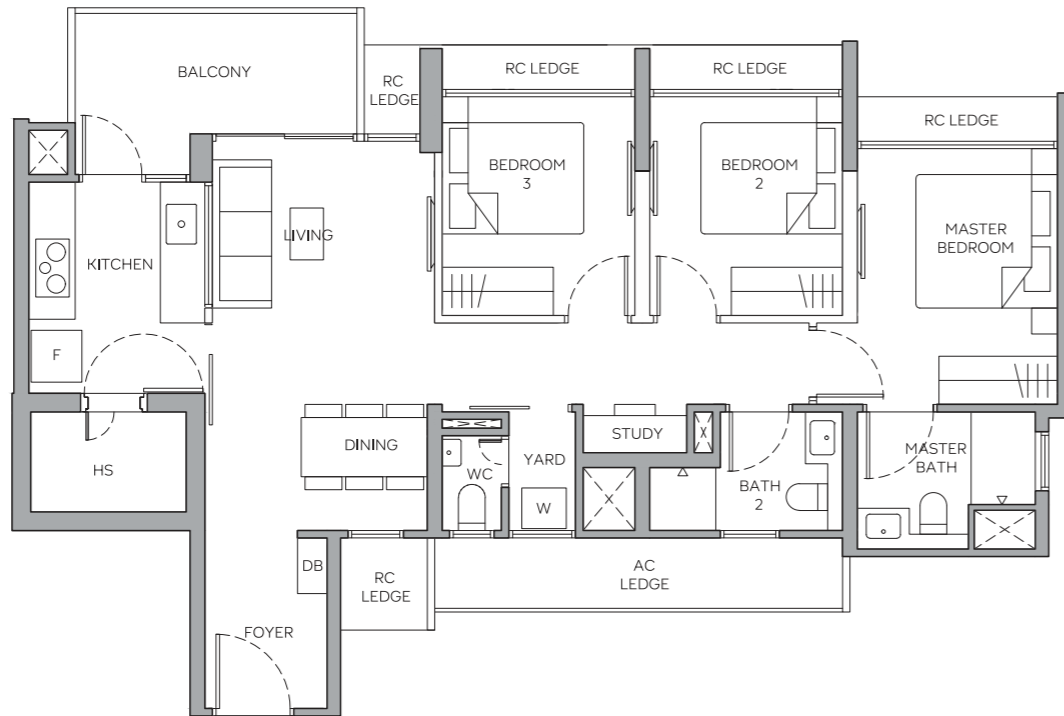
BLOCK 20 #01-04
BLOCK 22 #01-08
BLOCK 26 #01-16
BLOCK 28 #01-18
BLOCK 30 #01-22



TYPE C3

87 sqm / 936 sqft
(inclusive of 8 sqm Balcony)

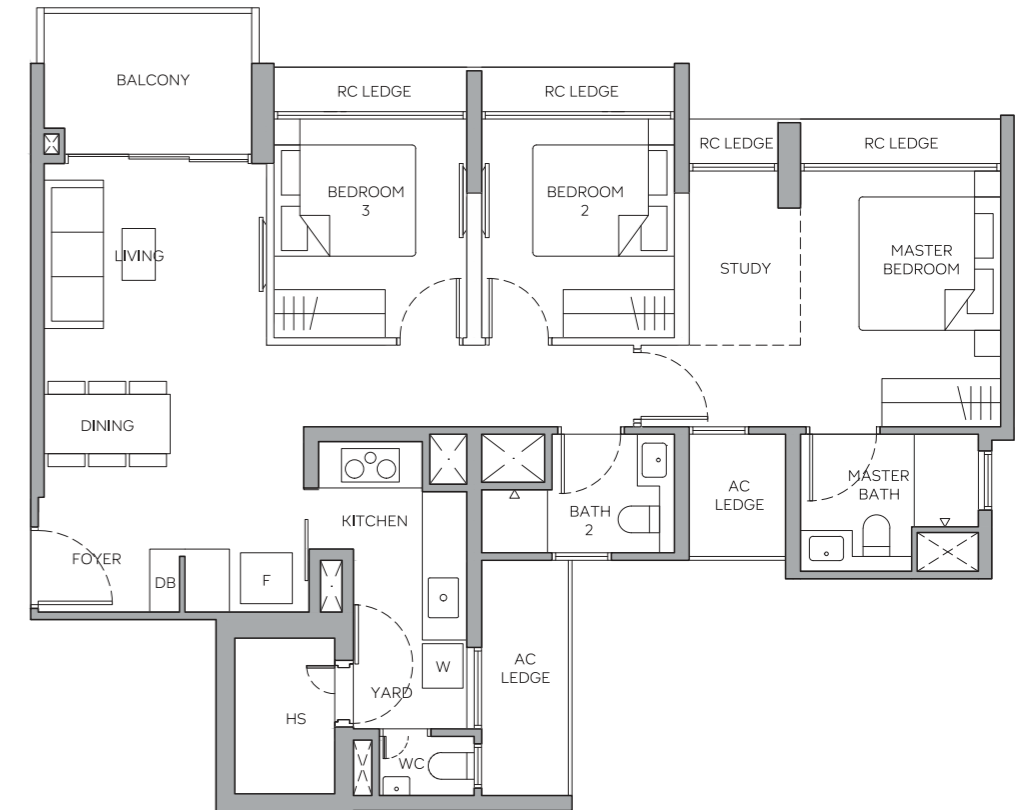
BLOCK 32 #02-27 TO #20-27
BLOCK 34 #02-31 TO #15-31



TYPE C4

88 sqm / 947 sqft
(inclusive of 6 sqm Balcony)

BLOCK 20 #02-04 TO #16-04
BLOCK 22 #02-08 TO #20-08
BLOCK 26 #02-16 TO #20-16
BLOCK 28 #02-18 TO #20-18
BLOCK 30 #02-22 TO #20-22

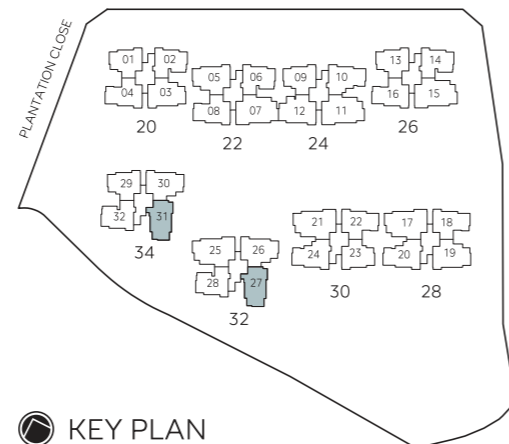


LEGEND

F	FRIDGE (NOT INCLUDED)	PES	PRIVATE ENCLOSED SPACE
W	WASHER (NOT INCLUDED)	AC	AIR CONDITIONER LEDGE (NON-STRATA)
DB	DISTRIBUTION BOARD	RC	REINFORCED CONCRETE LEDGE (NON-STRATA)
HS	HOUSEHOLD SHELTER	⊠	VOID SPACE (NON-STRATA)
WC	WATER CLOSET		

0 2m 4m 6m 8m

ALL PLANS ARE SUBJECT TO CHANGES BY THE RELEVANT AUTHORITIES.
MEASUREMENTS ARE APPROXIMATE ONLY AND SUBJECT TO FINAL SURVEY.
INFORMATION ACCURATE AT POINT OF PRINTING.
BP APPROVAL NO.: A1839-00007-2024-BP01 DATED 08 MAY 2025



KEY PLAN

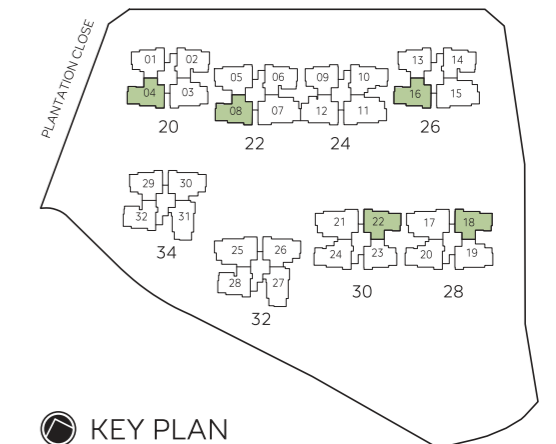
LEGEND

F	FRIDGE (NOT INCLUDED)	PES	PRIVATE ENCLOSED SPACE
W	WASHER (NOT INCLUDED)	AC	AIR CONDITIONER LEDGE (NON-STRATA)
DB	DISTRIBUTION BOARD	RC	REINFORCED CONCRETE LEDGE (NON-STRATA)
HS	HOUSEHOLD SHELTER	⊠	VOID SPACE (NON-STRATA)
WC	WATER CLOSET		

0 2m 4m 6m 8m

ALL PLANS ARE SUBJECT TO CHANGES BY THE RELEVANT AUTHORITIES.
MEASUREMENTS ARE APPROXIMATE ONLY AND SUBJECT TO FINAL SURVEY.
INFORMATION ACCURATE AT POINT OF PRINTING.
BP APPROVAL NO.: A1839-00007-2024-BP01 DATED 08 MAY 2025

3-BEDROOM LUXURY + STUDY



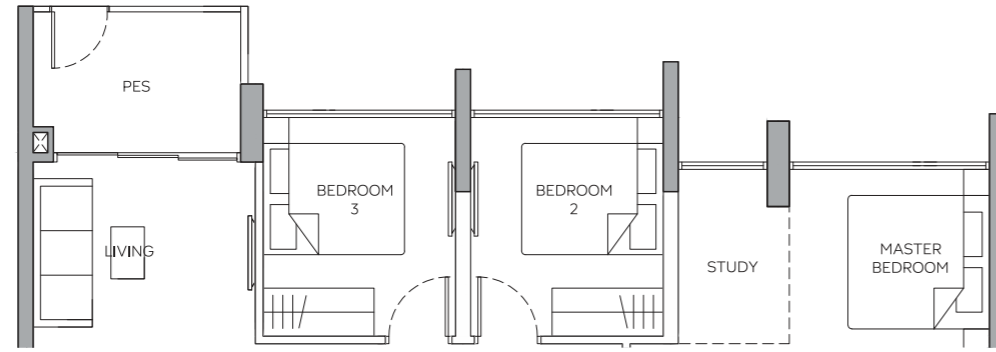
KEY PLAN

3-BEDROOM LUXURY + STUDY

TYPE C5-G

89 sqm / 958 sqft
(inclusive of 6 sqm PES)

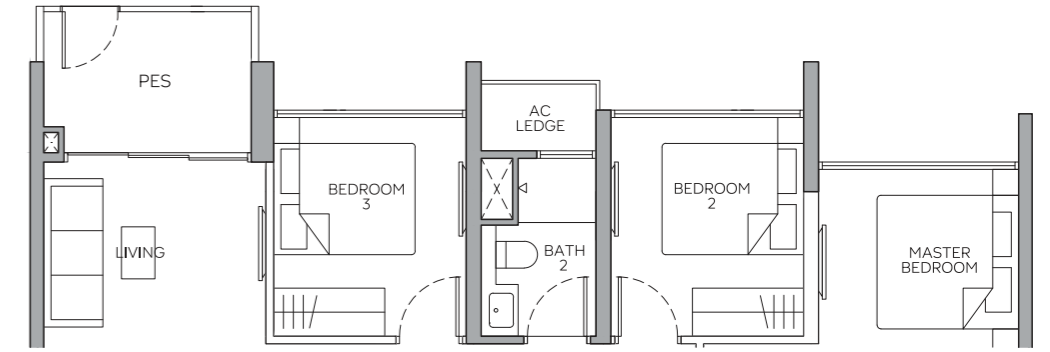
- BLOCK 24 #01-10
- BLOCK 28 #01-20
- BLOCK 30 #01-24



TYPE D1-G

94 sqm / 1012 sqft
(inclusive of 6 sqm PES)

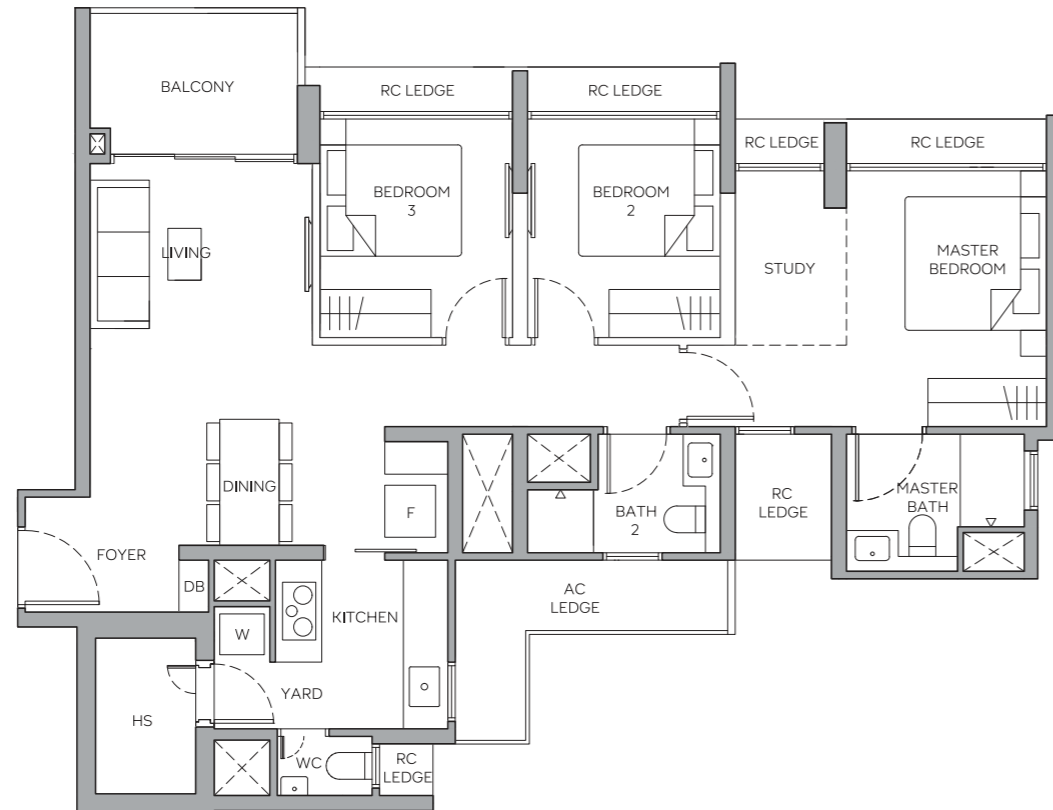
- BLOCK 20 #01-03*
- BLOCK 22 #01-05*
- BLOCK 24 #01-12
- BLOCK 28 #01-19*
- BLOCK 32 #01-26
- BLOCK 34 #01-30



TYPE C5

89 sqm / 958 sqft
(inclusive of 6 sqm Balcony)

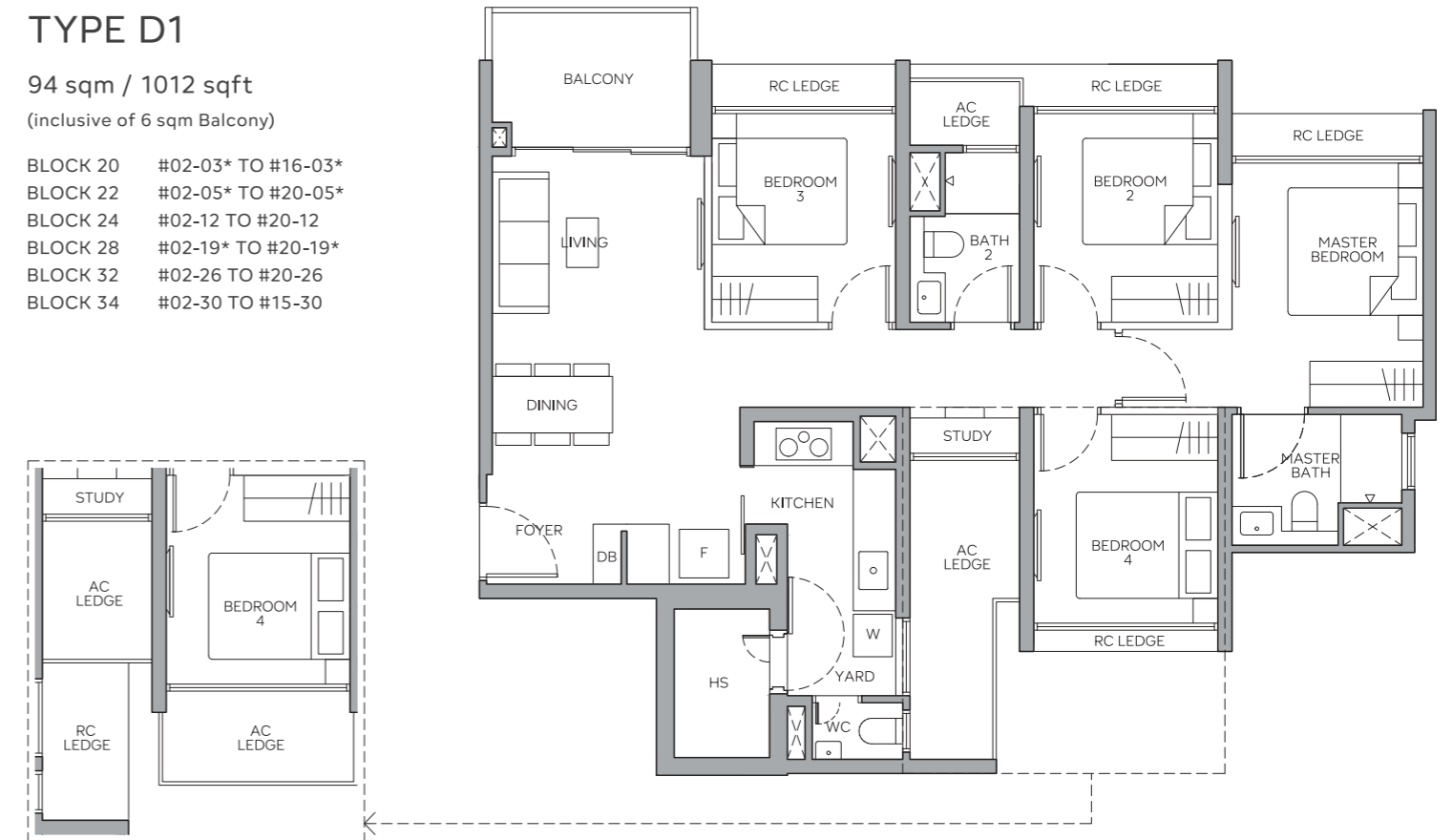
- BLOCK 24 #02-10 TO #20-10
- BLOCK 28 #02-20 TO #20-20
- BLOCK 30 #02-24 TO #20-24



TYPE D1

94 sqm / 1012 sqft
(inclusive of 6 sqm Balcony)

- BLOCK 20 #02-03* TO #16-03*
- BLOCK 22 #02-05* TO #20-05*
- BLOCK 24 #02-12 TO #20-12
- BLOCK 28 #02-19* TO #20-19*
- BLOCK 32 #02-26 TO #20-26
- BLOCK 34 #02-30 TO #15-30

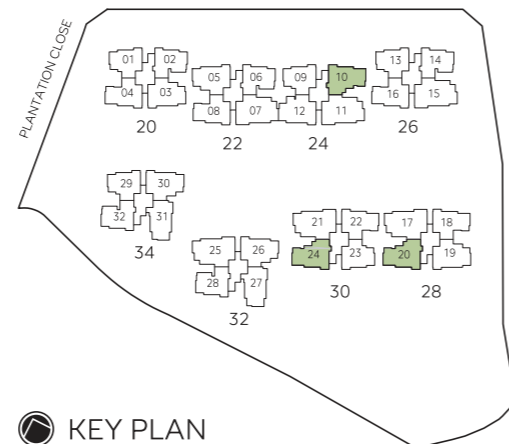


APPLICABLE TO BLOCK 24
TYPE D1-G #01-12
TYPE D1 #02-12 TO #20-12

LEGEND

- | | | | |
|----|-----------------------|-----|--|
| F | FRIDGE (NOT INCLUDED) | PES | PRIVATE ENCLOSED SPACE |
| W | WASHER (NOT INCLUDED) | AC | AIR CONDITIONER LEDGE (NON-STRATA) |
| DB | DISTRIBUTION BOARD | RC | REINFORCED CONCRETE LEDGE (NON-STRATA) |
| HS | HOUSEHOLD SHELTER | ⊠ | VOID SPACE (NON-STRATA) |
| WC | WATER CLOSET | | |

0 2m 4m 6m 8m



KEY PLAN

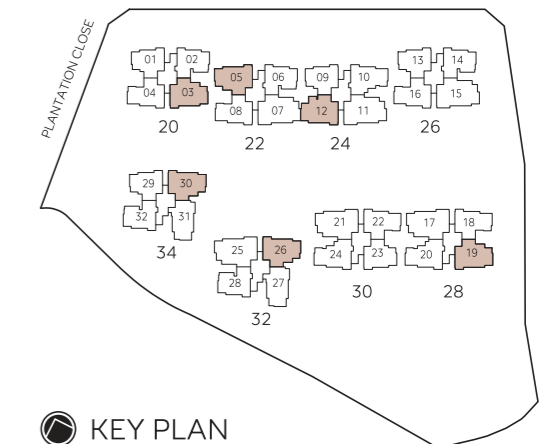
ALL PLANS ARE SUBJECT TO CHANGES BY THE RELEVANT AUTHORITIES.
MEASUREMENTS ARE APPROXIMATE ONLY AND SUBJECT TO FINAL SURVEY.
INFORMATION ACCURATE AT POINT OF PRINTING.
BP APPROVAL NO.: A1839-00007-2024-BP01 DATED 08 MAY 2025

4-BEDROOM DELUXE + STUDY

LEGEND

- | | | | |
|----|-----------------------|-----|--|
| F | FRIDGE (NOT INCLUDED) | PES | PRIVATE ENCLOSED SPACE |
| W | WASHER (NOT INCLUDED) | AC | AIR CONDITIONER LEDGE (NON-STRATA) |
| DB | DISTRIBUTION BOARD | RC | REINFORCED CONCRETE LEDGE (NON-STRATA) |
| HS | HOUSEHOLD SHELTER | ⊠ | VOID SPACE (NON-STRATA) |
| WC | WATER CLOSET | * | MIRRORED UNIT |

0 2m 4m 6m 8m



KEY PLAN

ALL PLANS ARE SUBJECT TO CHANGES BY THE RELEVANT AUTHORITIES.
MEASUREMENTS ARE APPROXIMATE ONLY AND SUBJECT TO FINAL SURVEY.
INFORMATION ACCURATE AT POINT OF PRINTING.
BP APPROVAL NO.: A1839-00007-2024-BP01 DATED 08 MAY 2025

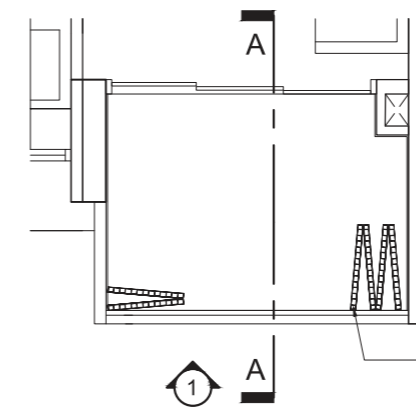
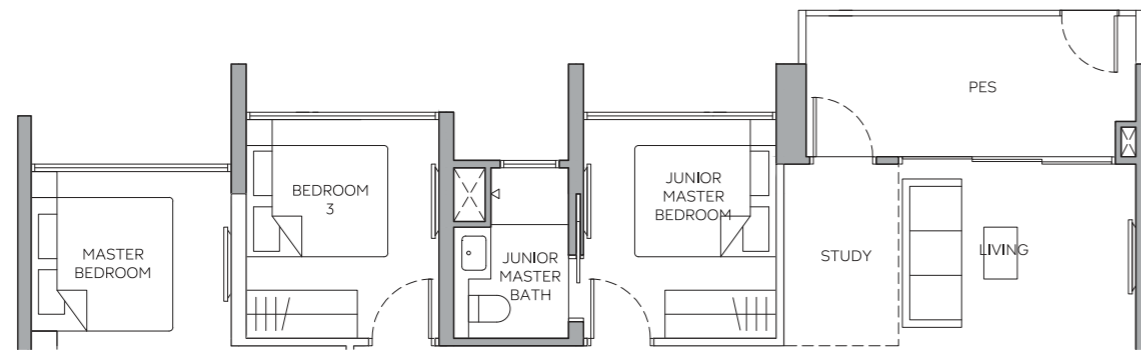
4-BEDROOM LUXURY + STUDY

BALCONY SCREEN

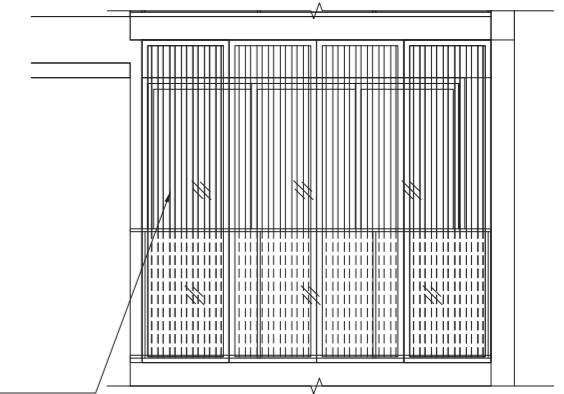
TYPE D2-G

111 sqm / 1195 sqft
(inclusive of 9 sqm PES)

- BLOCK 22 #01-07
- BLOCK 24 #01-11
- BLOCK 26 #01-15
- BLOCK 28 #01-17
- BLOCK 30 #01-21
- BLOCK 32 #01-25



TYPICAL BALCONY SCREEN
(OPEN)



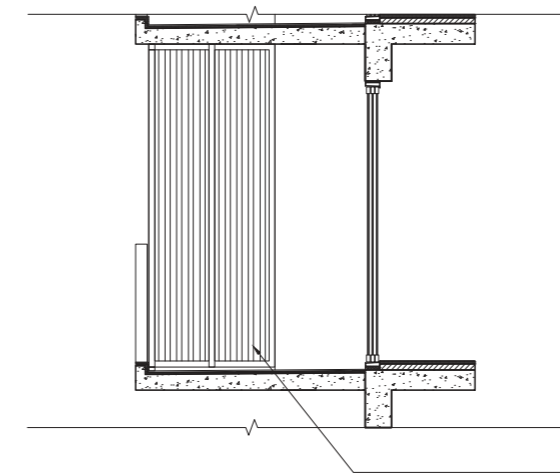
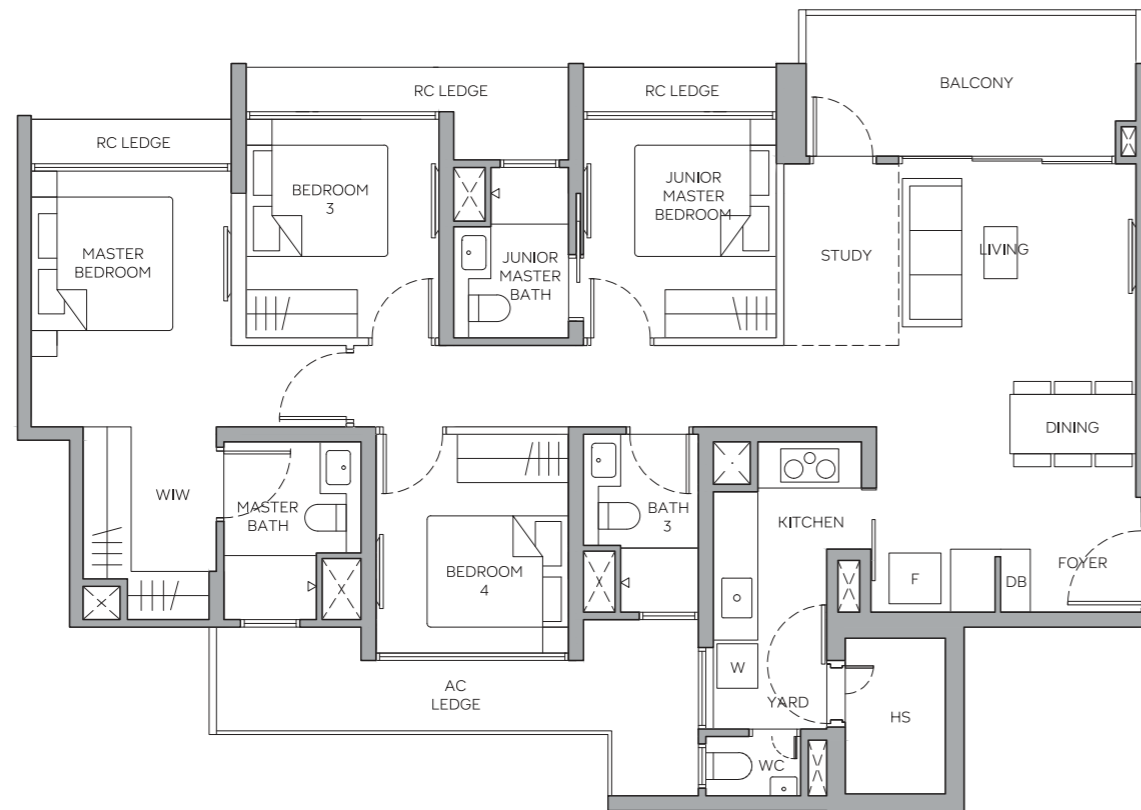
TYPICAL BALCONY SCREEN
(CLOSED)

POWDER COATED ALUMINUM
SCREEN PANELS CAPABLE OF
BEING DRAWN OPEN TO ALLOW
NATURAL VENTILATION WITHIN
THE BALCONY AT ALL TIMES

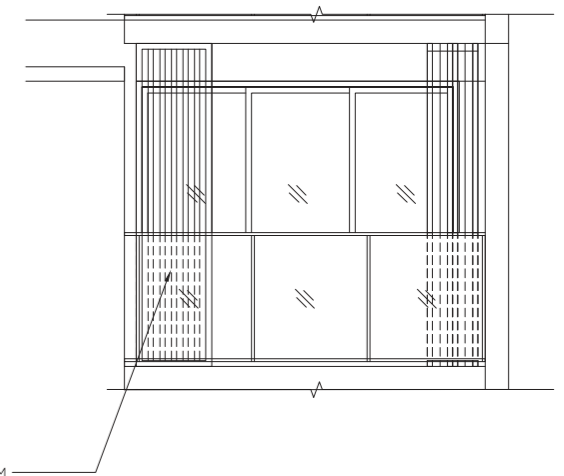
TYPE D2

111 sqm / 1195 sqft
(inclusive of 9 sqm Balcony)

- BLOCK 22 #02-07 TO #20-07
- BLOCK 24 #02-11 TO #20-11
- BLOCK 26 #02-15 TO #20-15
- BLOCK 28 #02-17 TO #20-17
- BLOCK 30 #02-21 TO #20-21
- BLOCK 32 #02-25 TO #20-25



TYPICAL BALCONY SCREEN
(CLOSED)



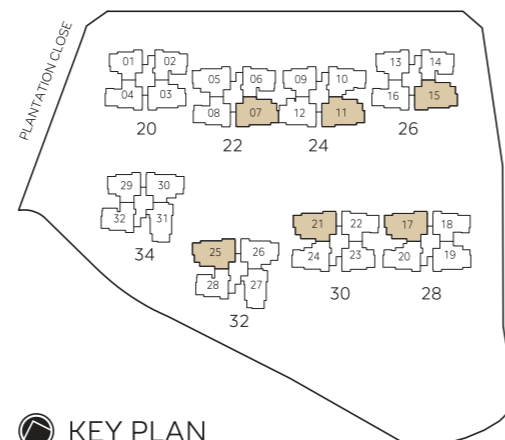
TYPICAL BALCONY SCREEN
(OPEN)

POWDER COATED ALUMINUM
SCREEN PANELS CAPABLE OF
BEING DRAWN OPEN TO ALLOW
NATURAL VENTILATION WITHIN
THE BALCONY AT ALL TIMES

LEGEND

- | | | | |
|----|-----------------------|-----|--|
| F | FRIDGE (NOT INCLUDED) | PES | PRIVATE ENCLOSED SPACE |
| W | WASHER (NOT INCLUDED) | AC | AIR CONDITIONER LEDGE (NON-STRATA) |
| DB | DISTRIBUTION BOARD | RC | REINFORCED CONCRETE LEDGE (NON-STRATA) |
| HS | HOUSEHOLD SHELTER | ∅ | VOID SPACE (NON-STRATA) |
| WC | WATER CLOSET | WIW | WALK-IN WARDROBE |

0 2m 4m 6m 8m



KEY PLAN

NOTES:






1. BALCONY SCREEN IS NOT PROVIDED FOR THIS DEVELOPMENT.
2. THE BALCONY SHALL NOT BE ENCLOSED UNLESS WITH THE SCREEN APPROVED BY THE RELEVANT AUTHORITIES.
3. FINAL SELECTION OF MATERIAL, COLOUR AND DETAILING OF THE SCREEN IS SUBJECT TO MCST APPROVAL.
4. APPROVAL FROM MCST IS REQUIRED BEFORE INSTALLATION.
5. OWNER MAY OPT TO PRE-INSTALL THE SCREEN.
6. ALL INSTALLATION FEES TO BE BORNE BY THE OWNER.
7. MEASUREMENTS ARE APPROXIMATE ONLY AND SUBJECT TO FINAL SURVEY.

0 1m 2m 3m









PRINTING MAY ALTER THE SCALE OF THE DRAWING.
PLEASE VERIFY THE SCALE ON THE ABOVE SCALE BAR.

MORE INNOVATION FOR SMARTER, GREENER LIVING

Making sustainable choices is second nature when you care about the environment and people. That's why this development is designed with sustainability in mind, achieving the prestigious BCA Green Mark Platinum Super Low Energy certification.

- 
EV-CHARGING STATIONS
 With designated EV-charging lots in the car park, it's easier than ever to support the drive towards a greener future.
- 
SOLAR-SUPPLEMENTED ENERGY
 Solar Photovoltaic (PV) panels on rooftops help generate renewable energy for 30% of electrical needs in common areas.
- 
ENERGY-EFFICIENT COOLING
 5-tick rated air-conditioning systems bring energy consumption to a minimum while keeping you comfortable.
- 
E-WASTE BINS
 Conveniently placed e-waste bins encourage responsible disposal, promoting circularity and reducing landfill waste.
- 
CERTIFIED-SAFE MATERIALS
 Painting material finishes with low Volatile Organic Compound (VOC) emissions help ensure healthier indoor air quality and resident well-being.

Answer the door, turn the air-con on, or adjust safety settings on your home appliances – even when you're miles from home. With our smart home features at your fingertips, you can always stay connected and in control.

- 
SMART DOORBELL
 Answer the door remotely with live video and two-way audio on your phone.
- 
SMART LOCK
 Enjoy multiple ways to lock and unlock your door for your loved ones' convenience.
- 
SMART AIR-CON
 Cool your apartment remotely for the perfect welcome home.
- 
SMART GATEWAY
 Conveniently control all your smart devices via the smart home app on your mobile.
- 
SMART BOOKING
 Check on the availability of facilities and book via mobile app, anytime.
- 
SMART INVITE
 Send quick-access QR codes to let your guests in with ease.
- 
SMART KITCHEN APPLIANCES
 Make cooking simpler and safer with connected kitchen appliances controllable via your smartphone.
- 
SMART PARCEL BOXES
 Collect your deliveries at your own time and convenience – no scheduling required.

THE ESTEEMED COLLECTION

MORE EXPERTISE, BUILT ON A LEGACY OF EXCELLENCE

Launched as part of the inaugural Esteemed Collection, Otto Place is proudly brought to you by Hoi Hup Sunway, an award-winning collaboration between Hoi Hup Realty and Sunway Developments. Combining the expertise and experience of two real estate giants, this stellar partnership has inspired many successful projects such as The Continuum, Terra Hill, Ki Residences, Parc Central Residences EC and Novo Place EC.

The Continuum was named Best Premium Condo Development and Best Lifestyle Development 2023 at the PropertyGuru Asia Property Awards, as well as Top Development (Residential) and Landscape Excellence (Residential) at the EdgeProp Singapore Excellence Awards 2023. Additionally, Terra Hill won Best Premium Condo Interior Design, Highly Commended Best Premium Condo Development and Highly Commended Best Nature Integrated Development at the PropertyGuru Asia Property Awards (Singapore) 2023, and Sustainability Excellence (Residential) at the EdgeProp Singapore Excellence Awards 2023.



HOI HUP REALTY

An established property developer in Singapore, Hoi Hup Realty Pte Ltd is committed to creating living spaces of the highest quality, comfort, functionality, and style. Its expertise has brought an array of residential, commercial and hospitality developments to completion. Over the years, it has also been recognised with many accolades including Best Lifestyle Developer at the PropertyGuru Asia Property Awards 2023, Top Sustainable Developer at the EdgeProp Singapore Excellence Awards 2023, and BCI Asia Awards' Top Ten Developer from 2021 to 2023.

www.hoihup.com



Visit ottoplace.hoihup.com to find out more.

SUNWAY DEVELOPMENTS

Sunway Developments Pte Ltd is part of Sunway Property, the real estate division of a leading conglomerate in Southeast Asia, Sunway Group. As the Master Community Developer, Sunway Property has established a reputation in managing and developing innovative residential, commercial and retail properties in the region. Named Malaysia's top 10 property developer by The Edge yearly for over a decade, it aspires to build a better tomorrow by creating integrated spaces where communities thrive, businesses grow, and investments endure through a safe, healthy and connected environment. In Singapore, Sunway Property has been active for nearly 20 years, delivering over 16 projects.

www.sunway.com.my



Developer: Hoi Hup Sunway Plantation Pte Ltd • Company Reg No.: 202406316D • Developer's Licence No.: C1522 • Tenure of Land: 99 years from 13 May 2024 • Lot No.: Lot 05428V MK 10 at Plantation Close (Tengah planning area) • Notice of Vacant Possession: 30 June 2030 • Notice of Completion: 30 June 2033 • BP Approval No.: A1839-00007-2024-BP01 dated 08 May 2025 • Encumbrances on the Land: Mortgage in favour of Oversea-Chinese Banking Corporation Limited

Whilst reasonable care has been taken in the preparation of this brochure and the construction of the scale model and showflat, the Developer does not warrant their accuracy and cannot be held responsible for any inaccuracies or omissions. The statements, information and depictions may not be regarded or relied upon as statements or representations of fact, and they are not intended to form any part of the contract for the sale of the housing units. Visual representations, models, showflat, illustrations, photographs, pictures, drawings, displays and art renderings are artists' impressions of the development only, and are not to be relied upon as representations of fact. The brand, colour and model of all materials, fittings, equipment, finishes, installations and appliances supplied/provided are subject to the Developer's/its architect's selection, market availability and the sole discretion of the Developer.

All information, including equipment, materials, fittings, finishes, installations and appliances, descriptions, plans and specifications, are current at the time of publishing, and are subject to such changes as may be required by the Developer or the relevant authorities, and cannot form part of an offer or contract. All plans and layouts are not to scale and are subject to change/amendments as may be directed or approved by the relevant authorities. The areas indicated in the brochure are approximate measurements only and are subject to final survey. The Developer reserves the right to modify any unit, plans, layouts, the building, the development or any part thereof prior to completion in its absolute discretion or as directed or approved by the architect or relevant authorities.

